

Loading new presets into your Martin Audio DX1









The file DX1load.zip contains the loader software and binary files. Extract these to your hard disk. Do not run the program from the CD.

Warning

Reprogramming will overwrite all factory presets - and changes to those factory presets (e.g. channel gain, delay, limiter threshold) in memory position 20 onwards.
To make a permanent record of changes to the user-editable parts of a preset, such as gain trim, delay or limiter settings, you must save the preset in one of the 19 user memories.
For further DX1 details please read the DX1 User Guide – DX1_EN.pdf
Make sure you have a full set of .bin files before proceeding so that you can reload your original presets if you need to.

You should have extracted the following files to a suitable folder on your hard drive:

-  **MarLoad.exe** - the DX1 loader
-  **MARm_180+005.bin** - latest DX1 software plus general (non-line array) loudspeaker presets except latest LE Series. See below for LE series.
-  **MARR0005.bin** - general (non-line array) presets, **MARRLE01.bin** - latest LE series presets
-  **MARRL01.bin** - W8L presets, **MARRLB02.bin** - Longbow presets (incl W8LS & W8LD)
-  **MARRLC02.bin** - W8LC presets, **MARRLCD3.bin** - W8LC+W8LCD presets
-  **MARRMLX2.bin** - W8LM/WLX presets, **MARRLMMX2.bin** - W8LM/WMX presets, **MARRLM218v2.bin** - W8LM/S218 or WS218X presets



You will need a 9 pin male-to-female RS232 cable (not the null modem type)...



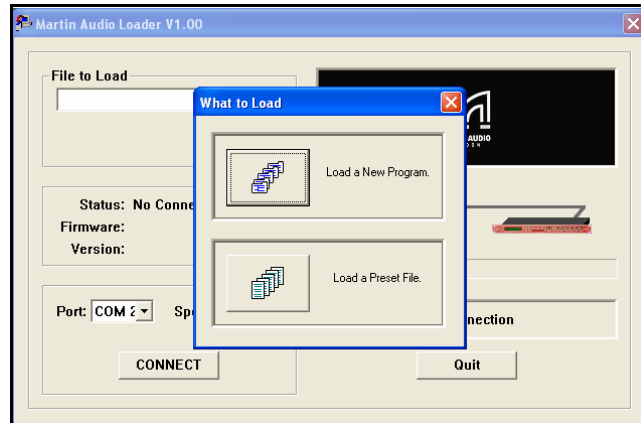
Used for uploading Martin Audio
loudspeaker management
software and presets

Wire all input & output XLR cables
with screens connected at both ends

To load the latest presets

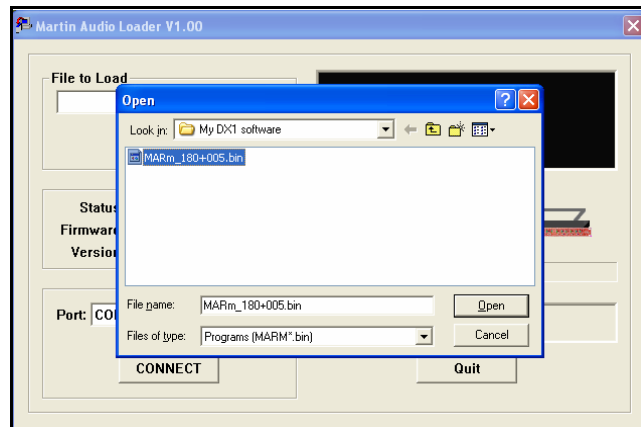
1. Connect the 9-pin male to 9-pin female DEE type serial cable from your computer to the external socket on the back of the unit. Note: this cable should be pin-to-pin - not the null modem type.
2. On the unit use the **menu**, **back**, **next** and **enter** keys to go into the **Interface Sub-menu** and then into **Interface setup**.
3. Once entered, setup as follows:
 -  **Extern. Mode = On**
 -  **RS232 Baud 9600 / 19200 / 38400 = 38400.**
4. Make sure all other programs are closed down. Load your DX1 is with the latest software as follows:

Run **Marload.exe**.

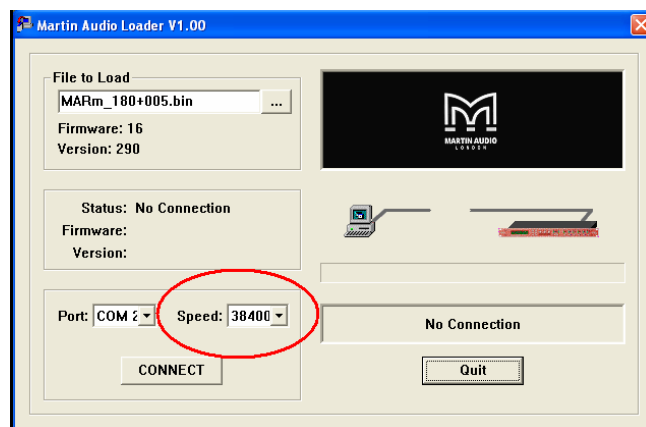


The program will offer two choices of action, **Load a New Program** or **Load a Preset File**.

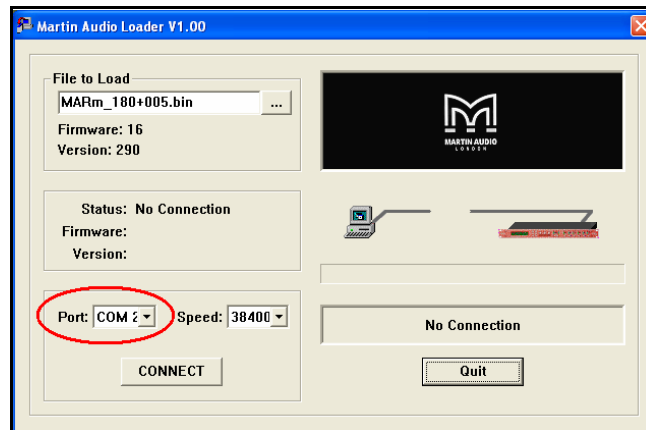
Click on **Load a New Program**.



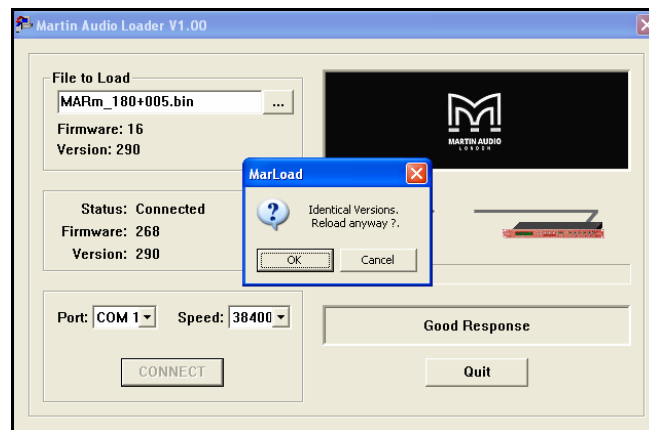
5. Highlight **MARm_180+005.bin** and click **Open**. This will load new software + the latest non-line array loudspeaker presets (including the AQ Series)
6. If you see the following screen, make sure the **Speed** box matches your chosen DX1 Baud rate (step 3), click **Connect** to retry



Also try different **Port** numbers until you get a good connection.

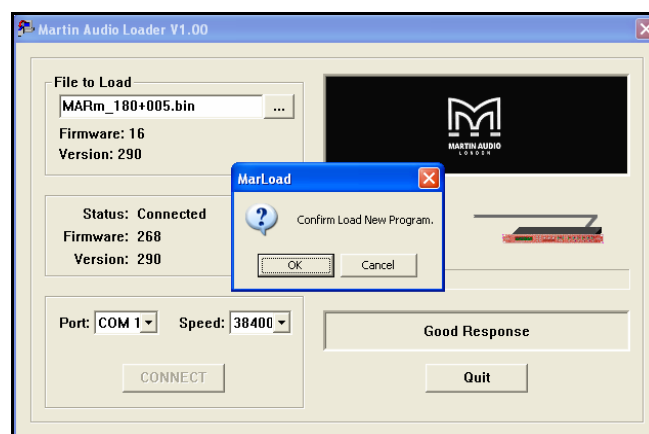


You may see the following screen

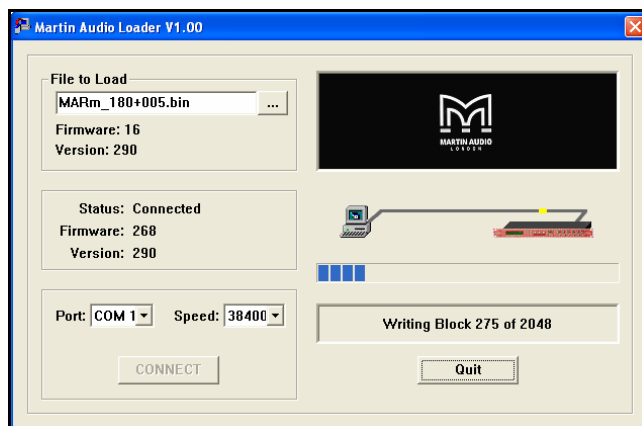


Click **OK**. It is always a good idea to refresh the program occasionally as this will ensure glitch-free operation and will make sure that your DX1 is loaded with the latest set of general product presets.

You may then be asked for confirmation. Click **OK** again.



You should get the following screen as the new software transfers. Note your successful Port number and Speed for future reference!

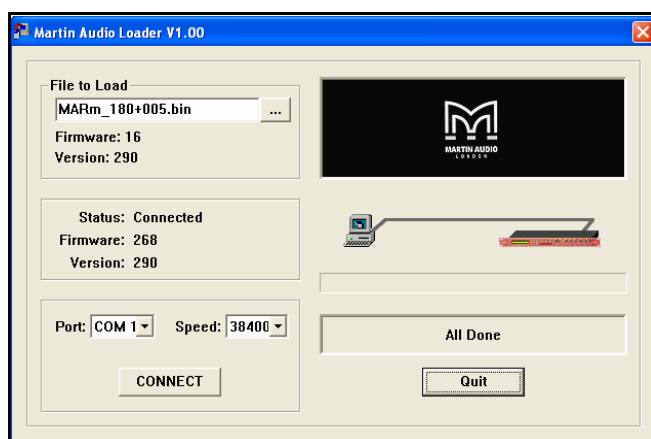


Your DX1 front panel should show scrolling block numbers like this...

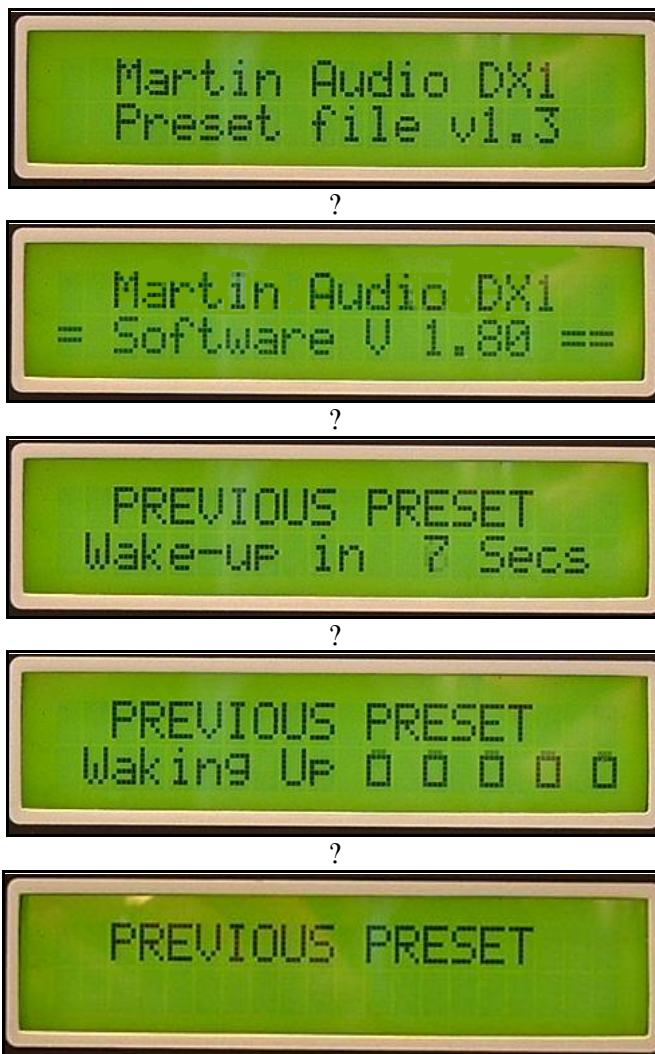


CAUTION! Do not quit during a transfer or your DX1 may get corrupted

7. Wait for your DX1 to reboot and settle when you see the following screen.



Your DX1 front panel should run through the following sequence...



8. Click **Quit** to shut down your Martin Audio loader and to clear the program.

Your DX1 is now updated with the latest software and general (non-line array) presets and is ready to be loaded with other presets (eg W8L, W8LC or W8LM) if you wish.

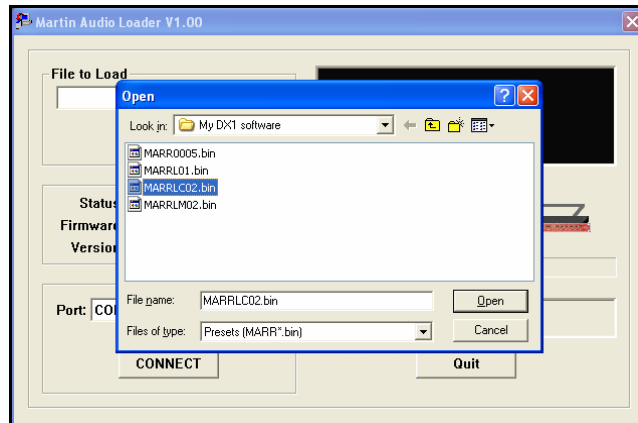
Please note:

When your DX1 finishes the wake-up process it will revert back to its previous preset – whatever settings were in use before your started loading new software or binary (.bin) preset files.

You will need to go to **Menu > Xover Sub-menu > Store a Xover** to store your previous settings - if you wish to save them for future use - and then go back to **Menu > Xover Sub-menu > Load a Xover** and use the **FREQ** control on the DX1 front panel, to select a new crossover preset from the .bin file just loaded.

To load W8L, W8LC or W8LM series presets, continue as follows:

9. Restart Marload.exe. The program will ask whether you want to load a new program or new presets. Click on **Load a Preset File**. The program will ask which file you want to load.
10. Select **MARRL01.bin** (W8L), **MARRLB02.bin** (Longbow incl W8LS/WS218X & W8LD), **MARRLC02 (W8LC)**, **MARRLCD3.bin** (W8LC+W8LCD), **MARRLM02.bin** (W8LM) & click **Open**.



11. If you don't get connected make sure the **Port** and **Speed** settings are as noted in 6 above. Once successfully connected you will be prompted to confirm preset loading. Click **OK** if all is well.

The presets will now start loading into the DX1 – this will take 10 – 25 seconds depending on the presets chosen.

Don't worry. The operation will *not* overwrite any of the first 19 user memories. Martin Audio presets start at memory number 20.

The DX1's display will indicate **Remote Load** and you'll see scrolling **Block** numbers.

Do not interrupt this process!

Once loading is complete **All Done** will be displayed in the lower right window of the loader display on your PC.

Your DX1 will run through its wake-up procedure again.

12. Quit the program.

Please note:

When your DX1 finishes the wake-up process it will revert back to its previous preset – whatever settings were in use before your started loading new software or binary (.bin) preset files.

You will need to go to **Menu > Xover Sub-menu > Store a Xover** to store your previous settings - if you wish to save them for future use - and then go back to **Menu > Xover Sub-menu > Load a Xover** and use the **FREQ** control on the DX1 front panel, to select a new crossover preset from the .bin file just loaded.